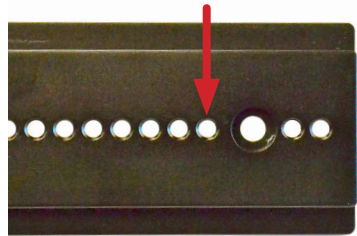
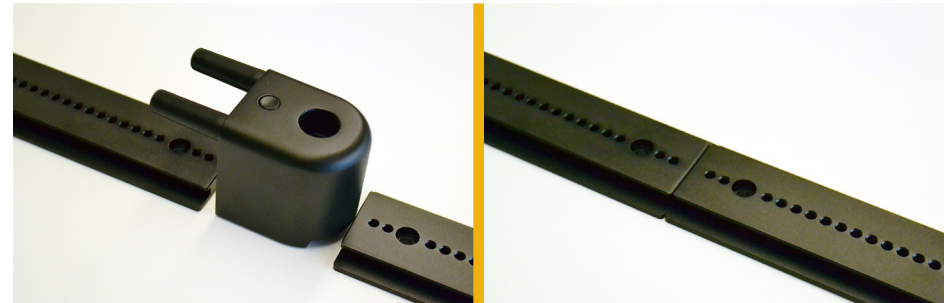
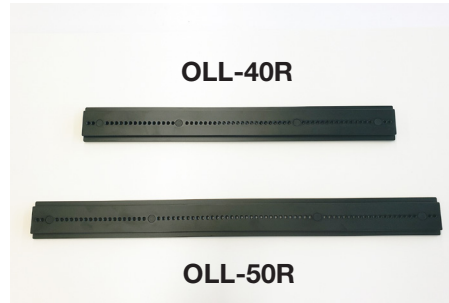


Laptop Lock Installation



IMPORTANT:

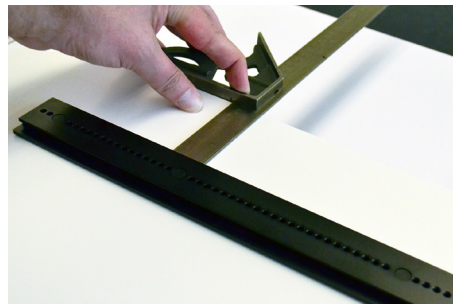
When installing the Laptop Locks onto the rail, ensure that the locking pins will sit in the first pin holes, past the bolt holes, so that the Laptop Locks will not hang over the ends of the rails. Do NOT set the locking pins in the bolt holes.



- 1 Ensure that the rail being used will fit the laptop being displayed.
 - OLL-40R for laptops of a max 31.5cm / 12.4in wide
 - OLL-50R for laptops of a max 41.5cm / 16.4in wide

- 2 Laptop Locks are intended to be modular and can be installed as either single positions or in a series for tighter planograms. Determine how the rails need to be placed.
 - If setting multiple single positions, use one of the locks to ensure that there is enough space between the rails, as shown in the first image.
 - If setting multiple rails in a long series, place the rails end to end, as shown in the second image.

Adhesive Mounting Option



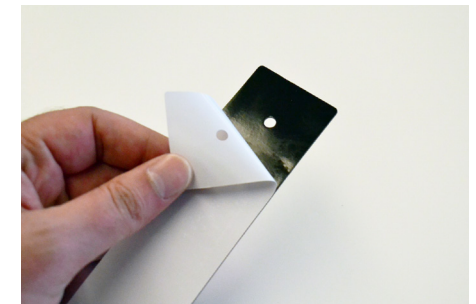
- 3 **Note:** When installing the rails, it may be helpful to use a square to ensure that the rails are installed in a straight line on the surface.



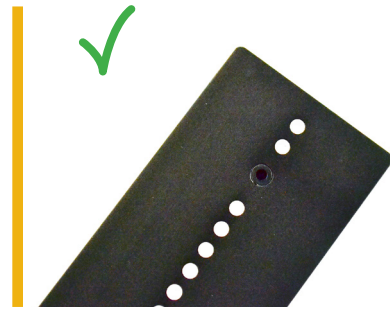
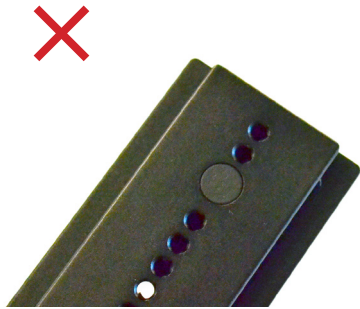
- 4 Use the provided alcohol wipe to clean the surface where the Laptop Lock rail(s) will be placed. Allow it to dry completely.



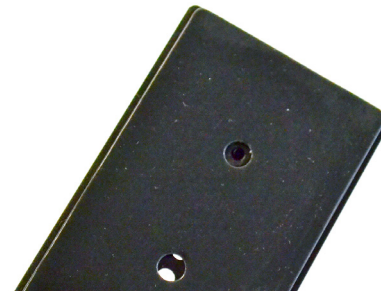
- 5 Use the alcohol wipe to clean each end of the the rail. Allow it to dry completely.



- 6 Peel the backing from one of the adhesives.



7 Ensure that the adhesives will be applied to the bottom, wider side of the rail.



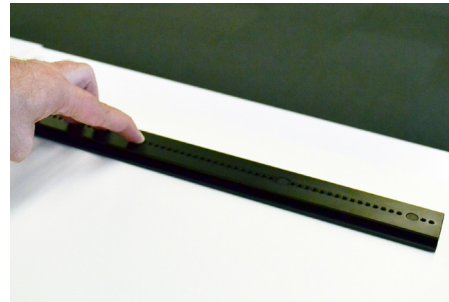
8 Align the adhesive with the edge of the rail. Ensure that there is no overhang. Smooth the adhesive into place for at least 10 seconds.



9 Repeat for the other adhesive.

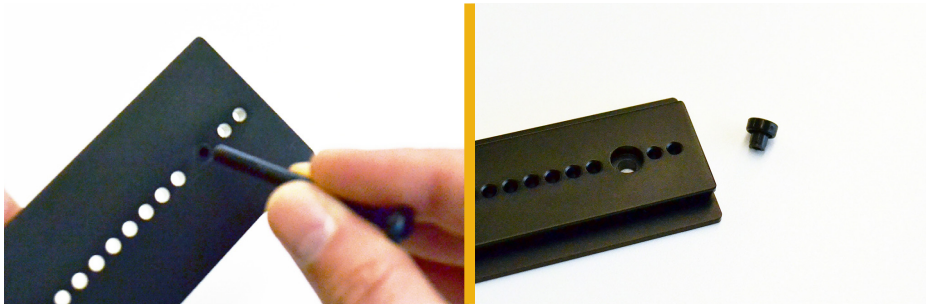


10 Peel the clear film from the 2 adhesives.

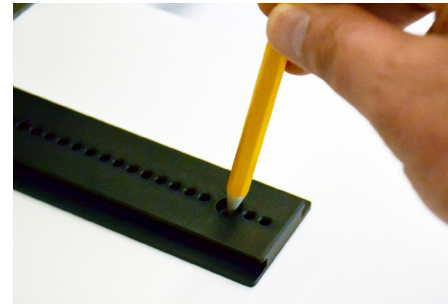


11 Place the rail onto the previously cleaned and measured/marked surface and apply pressure for at least 10 seconds

Bolt Mounting Option



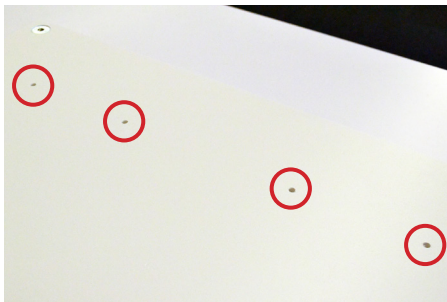
12 Use one of the provided bolts to push out the 4 plugs from the bolt holes.



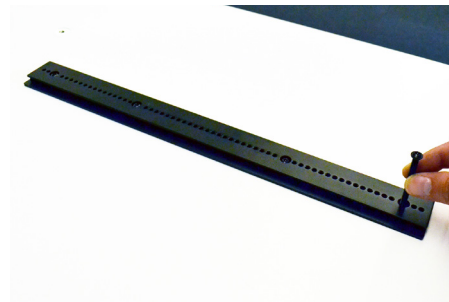
13 Use a pencil to mark the positions of the 4 holes in the rail.



14 Drill the hole using a 6mm (or 7/32 in) drill bit.



15 Repeat for the other 3 holes.



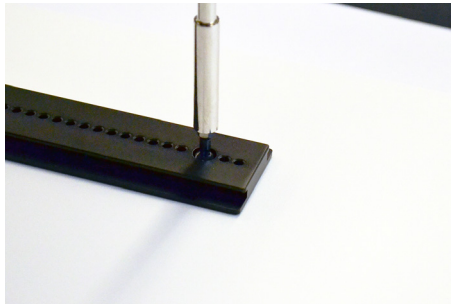
16 Align the holes in the rail with the holes that were drilled. Insert the provided bolts through the holes.



17 Below the counter, place the provided washers onto the bolts.



18 Thread the provided nuts onto the bolts.



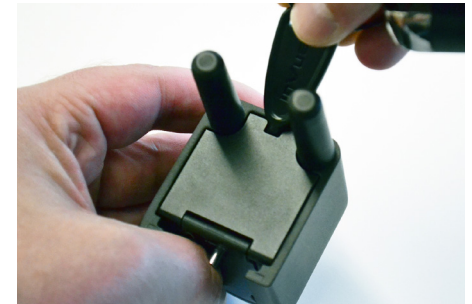
19a Above the counter, use a TT20 bit to hold the bolt in place.



19b Below the counter, use a 8mm deepwell socket to tighten the 4 nuts.



20 Center the laptop on the rail to determine the position of the locks.



21 On the lock without the IR Dot, insert a small tool (such as the one that is on the ring included with a OneKEY) into the small gap on the inside of the lock.



22 Open the panel to reveal the yellow button.



23 Slide the button upwards to retract the locking pin.



24 Slide the lock onto the rail and release the button to set the position of the lock as previously determined. Ensure that the lock is not hanging over the end of the rail and that the locking pin is NOT sitting in a bolt hole.

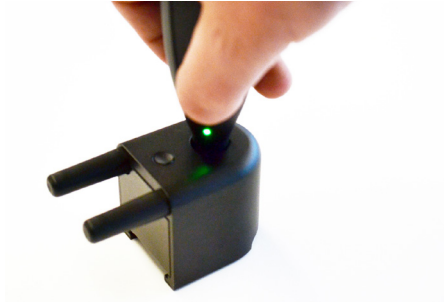


25 Close the panel on the lock.

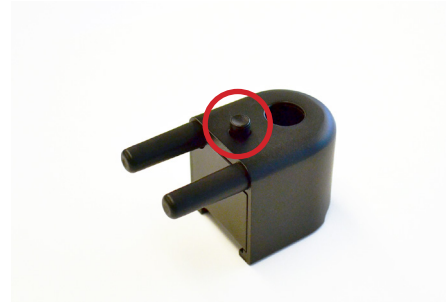
Note: The lock can be placed on either side of the rail.



26 Place the laptop screen into the pegs on the lock.



27 Place a charged and coded OneKEY into the port on the other lock. Press the button on the Key.



28 The button will pop up.



29 Slide the lock onto the rail, up against the laptop screen, and press the button to secure the lock. Ensure that the locks are not set too tight against the screen. A customer should still be able to slightly lift the laptop and tilt the screen freely.
Note: The lock can be placed on either side of the rail.

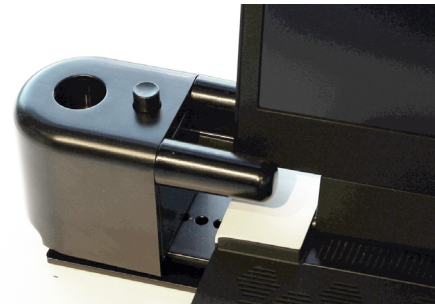
OLL-ADP Option



30 Place the the adaptor onto the pegs.



31 Push the adaptor fully onto the lock.



32 Adjust the screen on the laptop so that the notch fits into the adaptor.



33 Slide the lock in fully so that the laptop is captured.

Accessing a Secured Laptop



34 To access a secured laptop, place a charged and coded OneKEY into the port on the other lock. Press the button on the Key.



35 The button will pop up.

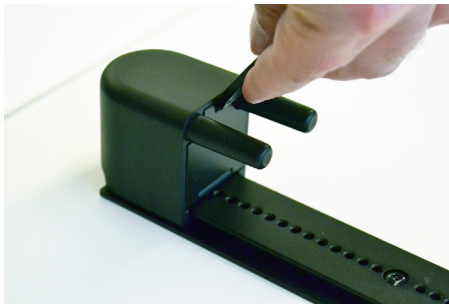


36 Slide the lock off the rail.

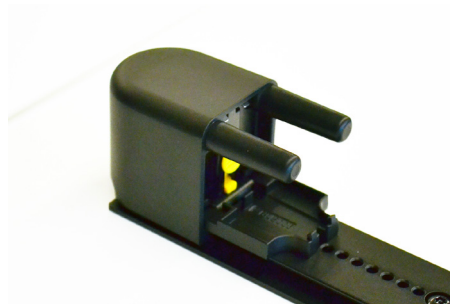


37 Remove the laptop from the other lock.

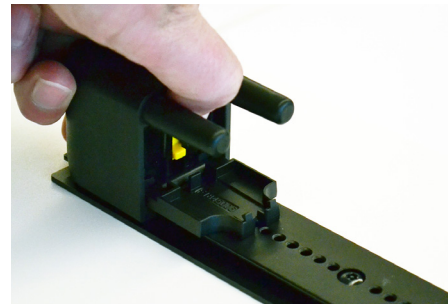
Removal



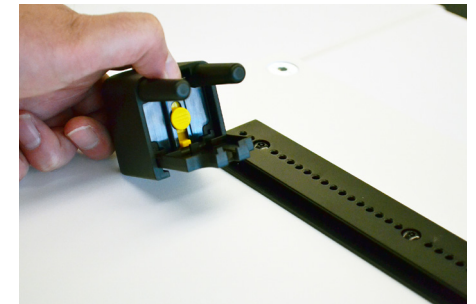
38 If the other lock needs to be removed for remerchandising, insert a small tool (such as the one that is on the ring included with a OneKEY) into the small gap on the inside of the lock.



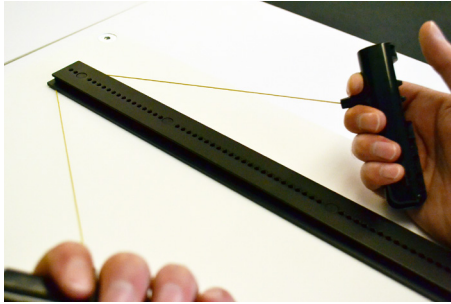
39 Open the panel to reveal the yellow button.



40 Slide the button upwards to retract the locking pin.



41 Slide the lock off of the rail.



- 42 If the adhesive mounting option was used and the rail needs to be removed, use the ADH-RT removal tool. Insert the cable between the surface and the rail and use a steady sawing motion to break the adhesive bond. New adhesives will be needed if remounting the rail.