

## Padlock Shackle Replacement Guide



**1** Insert a charged and coded OneKEY into the IR port on the bottom of the lock and press the button.



**2** Once the key has beeped in confirmation pull the shackle out from the lock body.



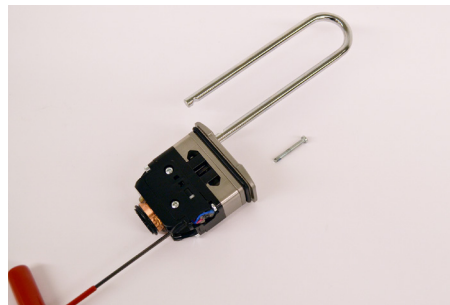
**3** Locate the screw inside the shackle hole.



**4** Use a 2.5 mm hex key to fully loosen the screw.



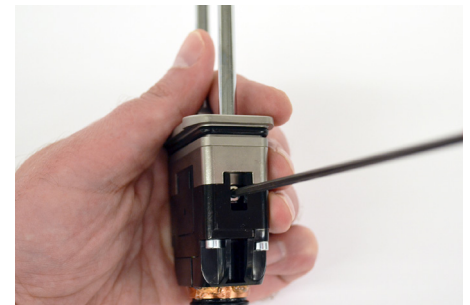
**5** Pull the lock internals from the lock body cover.



**6** Use the hex key to push the screw free from the lock internals.

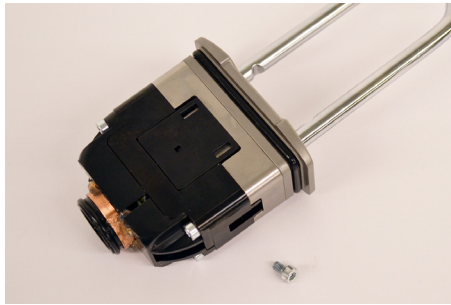


**7** Rotate the shackle to expose the shackle screw.

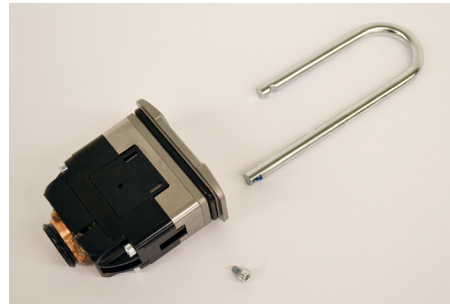


**8** Use a 2.5mm hex key to loosen the shackle screw.

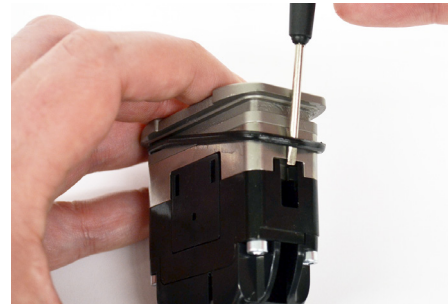
## Padlock Shackle Replacement Guide



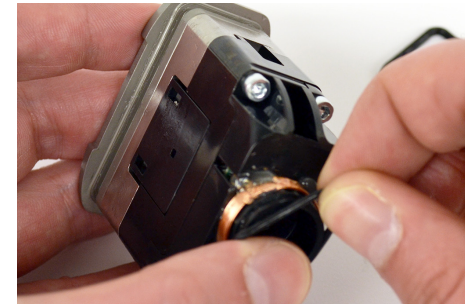
**9** Remove the shackle screw.



**10** Remove the shackle.



**11** Use a small flat head screwdriver to remove the rubber gasket from the top of the lock internals.



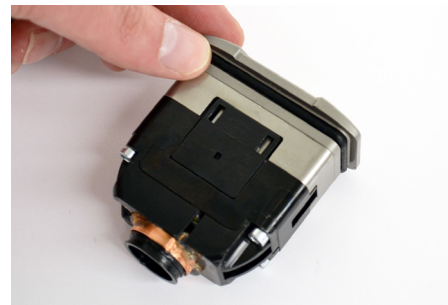
**12** Remove the small rubber gasket from around the IR port.



**13** Remove the new rubber gaskets included with the shackle replacement kit.



**14** Slide the top gasket up the lock internals.

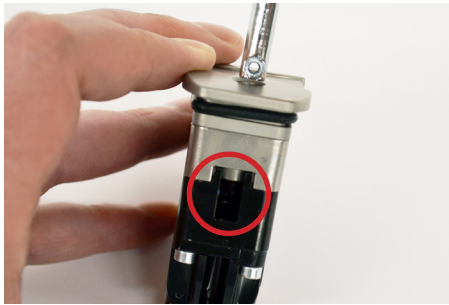


**15** Ensure the gasket sits in the groove below the upper lip.

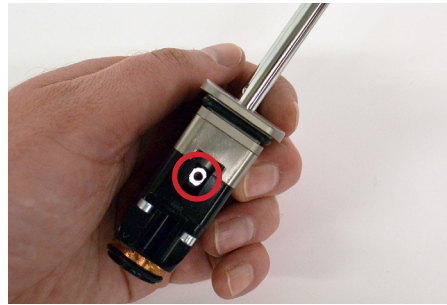


**16** Place the smaller circular gasket in the groove near the IR port.

## Padlock Shackle Replacement Guide



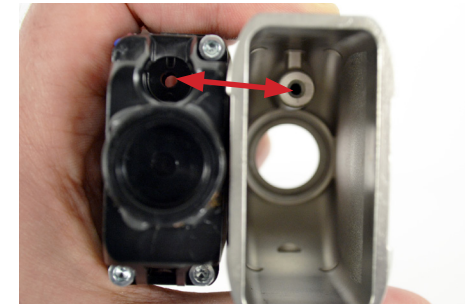
- 17** Insert the longer side of the new shackle into the side of lock with the small window.



- 18** Ensure that the shackle so that the screw hole is visible.



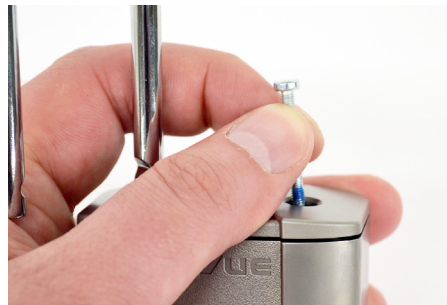
- 19** Insert the new small screw supplied with the shackle replacement kit and tighten with the 2.5mm hex key.



- 20** Align the screw in the lock internals with the screw hole in the lock body cover.



- 21** Insert the lock internals into the lock body cover.



- 22** Insert the new long screw into the open hole.



- 23** Fully tighten the screw using the 2.5 mm hex key. The lock is now ready to be reinstalled.