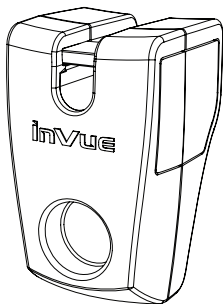
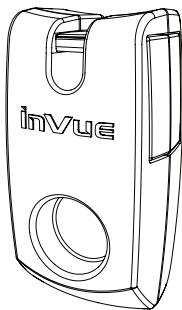


**invue**

**SABEL**

# IR StopLok

Instructions



**Overview**

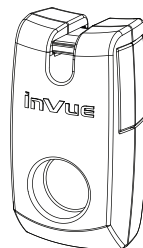
Important! Read entire instruction guide before starting installation.

**System Components**

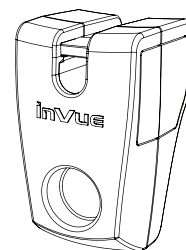
1. StopLok
2. IR2 Key

**System Overview:**

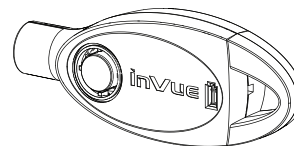
The StopLok adds security to non-secure hooks and allows the retailers to select the number of “live” and “locked” merchandise items.

**IR StopLok – 6 mm**

NS6A – 5.0 mm  
 NS6B – 5.5 mm  
 NS6C – 6.0 mm

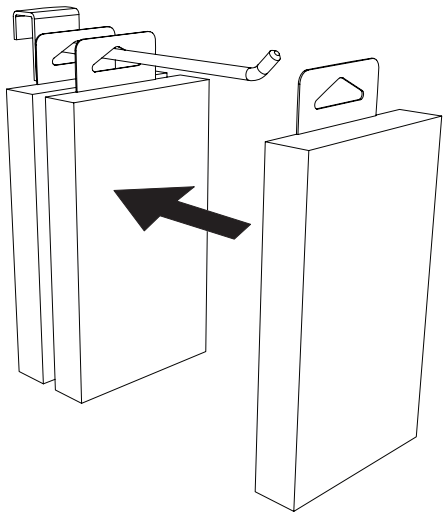
**IR StopLok – 8 mm**

NS8A – 6.4 mm  
 NS8B – 7.0 mm  
 NS8C – 8.1 mm

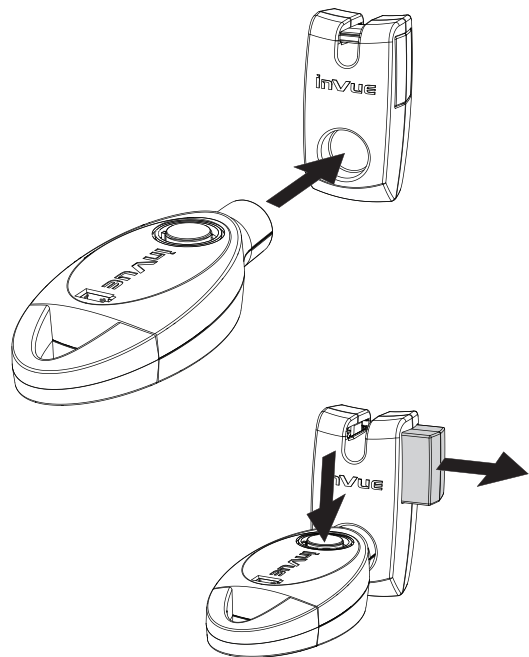


**IR2 Key**  
 PK4400

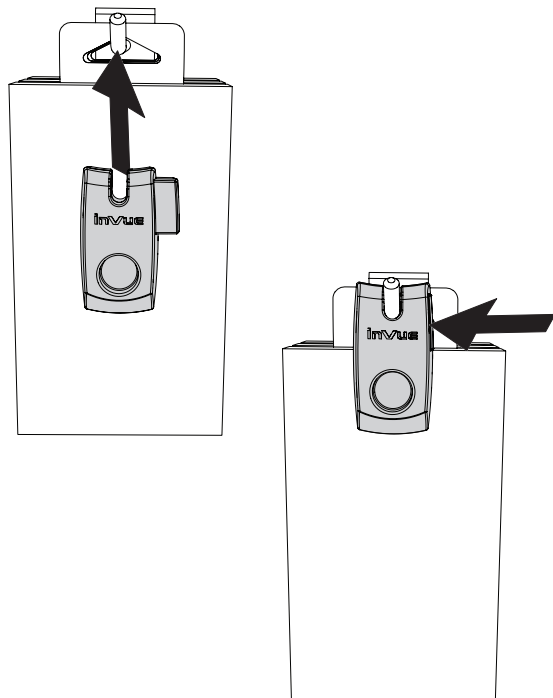
1



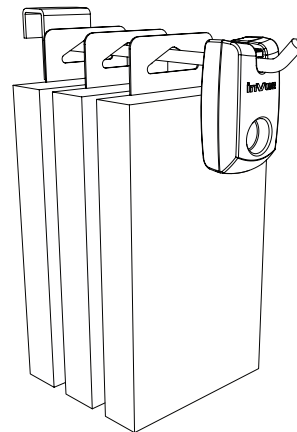
2



3



4





**SABEL**

1300 551 662

[info@sabel.com.au](mailto:info@sabel.com.au)